



Automation @ FE RBG Test Wafers are an Integral Part

Dr. Matthias Handke

Head of Automation - Infineon Regensburg

January 2025





Agenda



Speaker Intro



Talking about Automation



What does this mean for us



Our approach to handling test wafers



Speaker Introduction



Career started in the semiconductor industry in 1998 in Dresden (Siemens)



At Infineon Regensburg since 2004



Head of Automation since 2017



Background: Unit process engineering (CMP, Wafertest), Technology, Project Management, Operations and AMHS

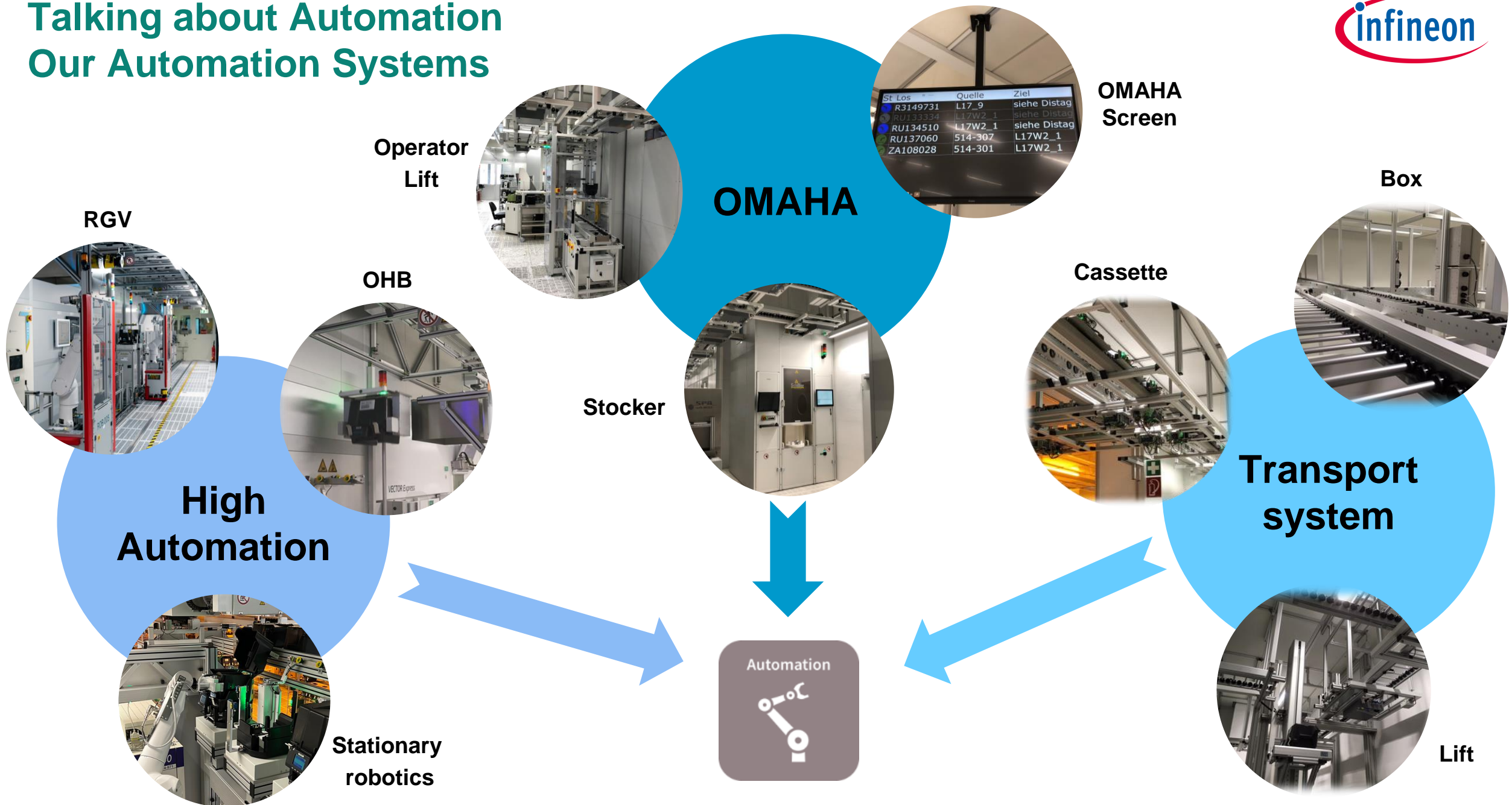
Talking about Automation

Our 4 Automation Levels

	Transport	Storage/Delivery	Tool Load/Unload
Level 4 (H _{igh} A _{utomation})	<ul style="list-style-type: none">› Transport System› E84 Handover	<ul style="list-style-type: none">› J-I-S PULL Delivery› Automated Stocker› Overhead Storage (OHB)	<ul style="list-style-type: none">› Tool Load/Unload w/ Robot
Level 3 (OMAHA)	<ul style="list-style-type: none">› Transport System› Operator Lift close to Work Center	<ul style="list-style-type: none">› J-I-S PULL Delivery ('Perfect Dispatch')› Automated Stocker	<ul style="list-style-type: none">› Tool Load/Unload by Operator (OMAHA)
Level 2	<ul style="list-style-type: none">› Transport System› Operator Lift in Area	<ul style="list-style-type: none">› PULL Delivery› Automated Stocker or RFID tracked Shelf	<ul style="list-style-type: none">› Tool Load/Unload by Operator
Level 1	<ul style="list-style-type: none">› Transport System› Operator Lift in Building	<ul style="list-style-type: none">› PUSH Delivery to Lift› Manual Lot Storage & Lot Retrieval	<ul style="list-style-type: none">› Tool Load/Unload by Operator

Talking about Automation

Our Automation Systems



Automation Level 3 and 4

What does this mean for the WIP?

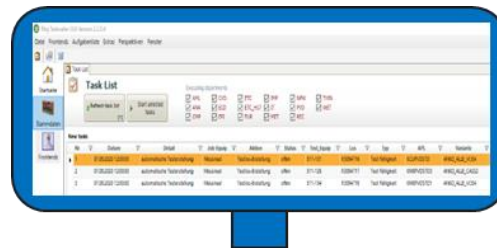


- Master data is maintained and available at all times
- Unique material identification (box, cassette, lot, wafers,...)
- All lots are 100% tracked
- Load & Go - no manual inputs
- Advanced dispatching rules (Push/Pull logistics) - no manual decisions
- Exception and deviation management established
- ...
- And no difference between product/engineering and test wafers !

Our Approach for the Test Wafers Centralized Areas

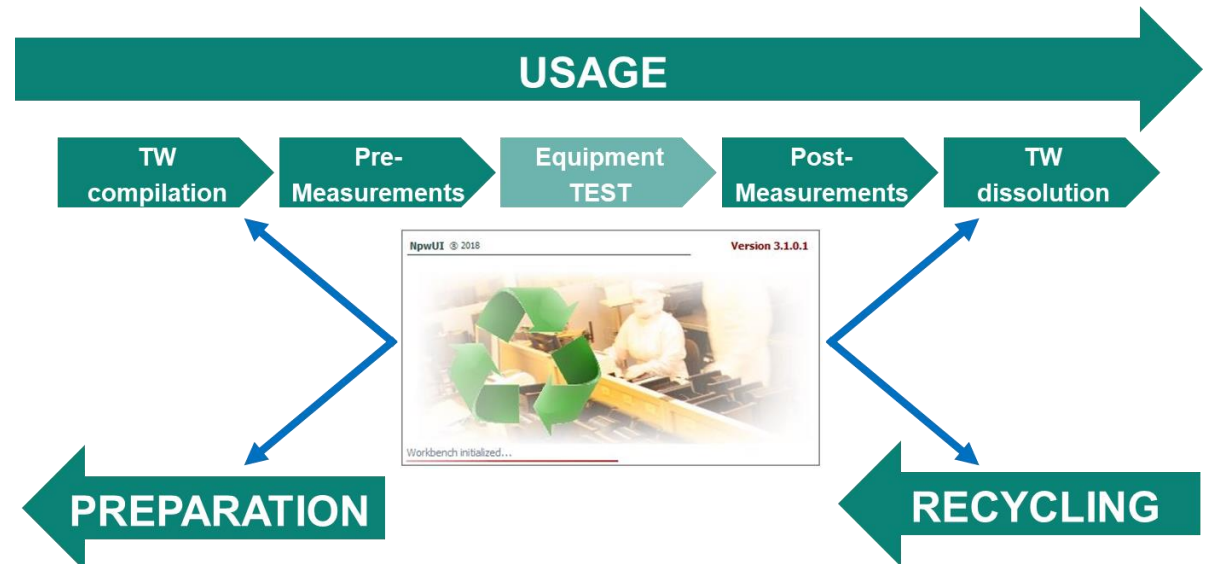
Key Elements

- Dedicated Shop Floor Area (per hall)
 - Every kind of Test Wafer is stored in that area
 - Equipped with RFID-Shelves/Stocker, Sorter/Mapper,...
- TW Operator
 - Compilation and dissolution of test wafers' lots
 - Processing of all Preparation and Recycling Wafers/Lots
- TW-UI (User Interface)
 - Task list for the TW operator
 - Scheduling the Test Wafers
 - Managing minimum stocks of Test Wafers



Workflow for Test Wafers

PREPARATION → USAGE → RECYCLING



Handling of Test Wafers in Centralized Areas

Benefits

- TW Operator
 - Dedicated with clear responsibility for complete test wafers' flow
 - 24/7 availability
 - Well-trained with lots of experience
- TW-UI (User Interface)
 - Prioritization based on clear rules
 - Monitoring demand and consumption
 - Part of the MES
- Potential to fully automate the compilation and dissolution steps
 - Significantly reduced manual effort
 - No interruptions due to break times, shift change,...





Thank you.